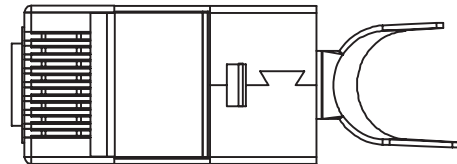
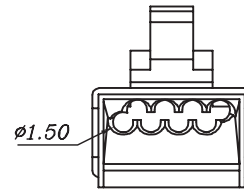
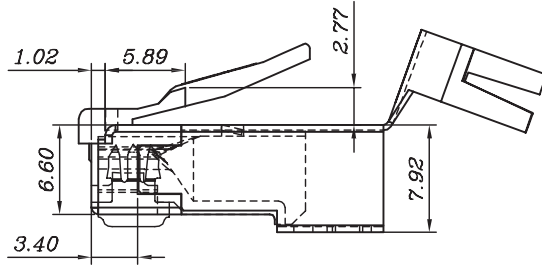
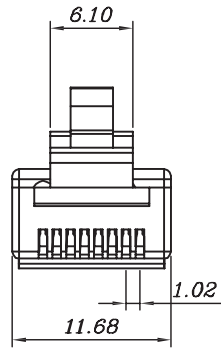
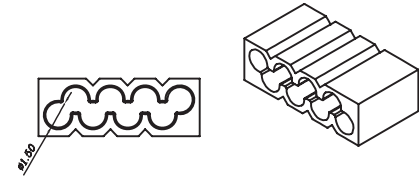
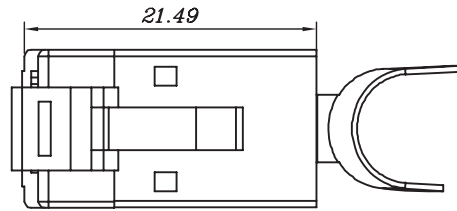




Structured Cable Products™
Quality Installations Deserve Quality Products



Specifications

1. Electrical:

UL APPLICATIONS: 250 VOLTS AC MAX., AT 2 AMPS
DIELECTRIC WITHSTANDING VOLTAGE: 500 VOLTS AC.
INSULATION RESISTANCE: 100M
TERMINATION: RESISTANCE 20m MAX AFTER ENVIRONMENTAL TESTING

2. Mechanical:

CABLE-TO-PLUG TENSILE STRENGTH: 20 POUND MIN.
DURABILITY: 350 MATING CYCLES

3. Material & Finish:

HOUSING: POLYCARBONATE, UL94V-2 OR UL94V-0
COLOR: TRANSPARENT OR OTHER COLOR ARE AVAILABLE
CONTACT BLADE: COPPER ALLOY
CONDUCTOR: STRANDED & SOLID WIRE 23 AWG, 24 AWG
GOLD PLATING: 50u", ARE AVAILABLE

accommodates Cable O.D. of 8mm (.315 inches)

4. Package:

100PCS/BAG - 25BAG/CARTON
CARTON SIZE: 42CMx42CMx25CM
N.W.: 7KG
G.W.: 8Kg

Description		Tolerance:	SCALE:	CUSTOMER:		SCP PART # : 106A	
CAT6/CAT6A Shielded RJ45 8P8C Modular Plug w/Loadbar		X. ±0.5	FREE			CUSTOMER P/N: 106A COMPANY P/N: Checked by	
		.X ±0.3	UNIT:				
		.XX ±0.10	mm				
		Angle:	REV.:	DWG. No.:		TITLE:	
REV.		X° ±3°	00	B120015		PLUG, RJ45 8P8C, CAT6A	
DATE		.X° ±1°	SHEET	1/1			