



# **iShare Wireless Presentation**

## **User Guide**

*2020 Version 1.0*

## *Table of Contents*

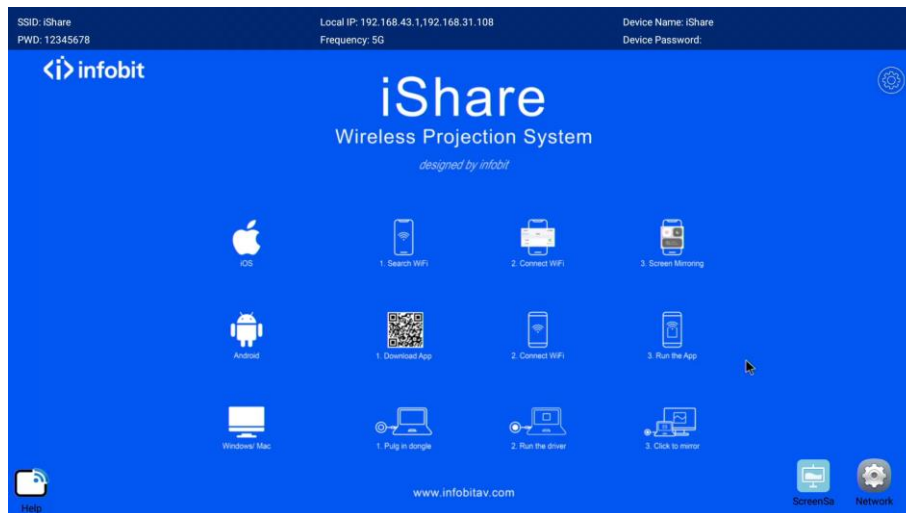
Preparations .....	1
USB Cast.....	2
Mobile Device Cast .....	3
WIFI Connection .....	3
iOS Cast .....	4
Android Cast.....	4
1. APP Cast.....	4
2. Miracast.....	5
FAQ .....	7
USB Dongles.....	7
Mobile Devices Cast.....	8
Change Lock Screen .....	8
Change Wallpaper.....	9
APP Updates.....	9
Cross Network Cast .....	10

## Preparations

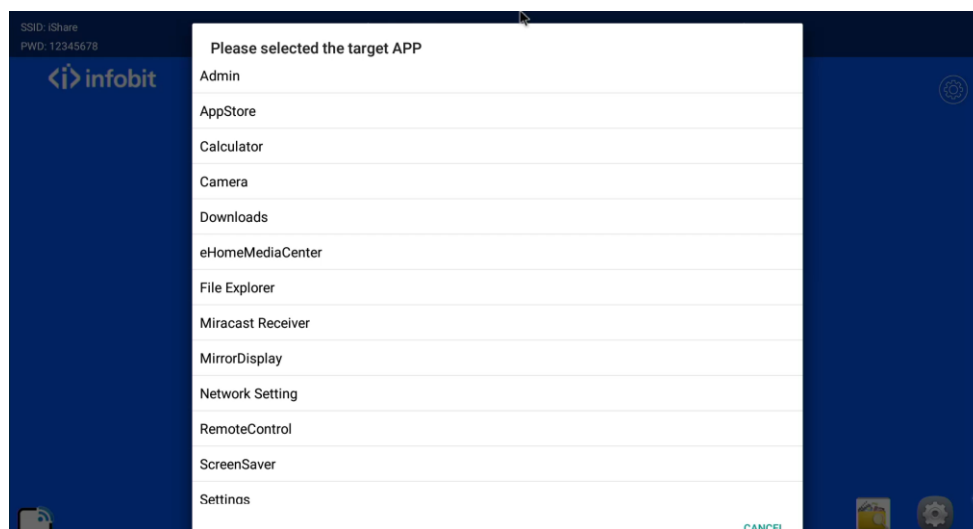
1. Unfold package to ensure your iShare and its accessories are complete and intact.

Model	Receiver	Antenna	Dongle
iShare 100	1x	Built-in	1x
iShare 200	1x	3x	2x
iShare 400	1x	4x	4x

2. Mount antenna to receiver, connect iShare receiver to display device (such as monitor, IFP and projector), and power up iShare. It takes 15-20s to enter into home page.
3. Home page interface as below illustrated:



4. A USB mouse is required to set up iShare by plugging into receiver through USB port. Left click represents "Confirm" and right click represents "Back".
5. Long press any of icons at right bottom to call out control center and select <Setting>.

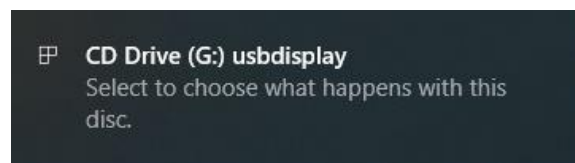


## USB Cast

Plug dongle into your computer, and wait for around 12s (indicator is flashing) during boot up. You are able to press the button to cast source when indicator is keeping on.



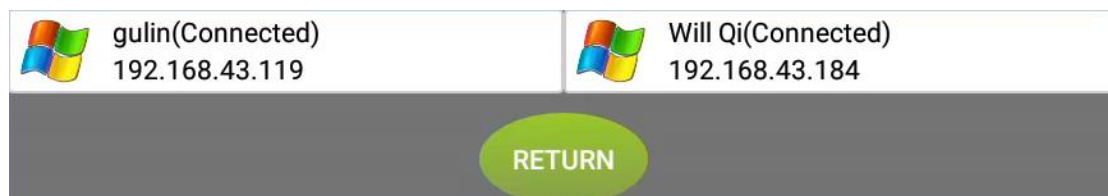
If the computer works with dongle for the first time, you have to run USBDisplay driver when it pops up after plugging in dongle, or follow My Computer->CD Drive USBDisplay to run the driver.



*Note:*

- 1) *For win 10 system, windows defender should be disabled.*
- 2) *In some cases, due to the blocks from anti-virus software, users may need to run USBDisplay driver though computer was not used for the first time.*

When communication established between dongle and receiver, a green button will appear at left top corner. The figure reflects number of connected dongles. Click the button to manage withdraw or cast of connected dongles.

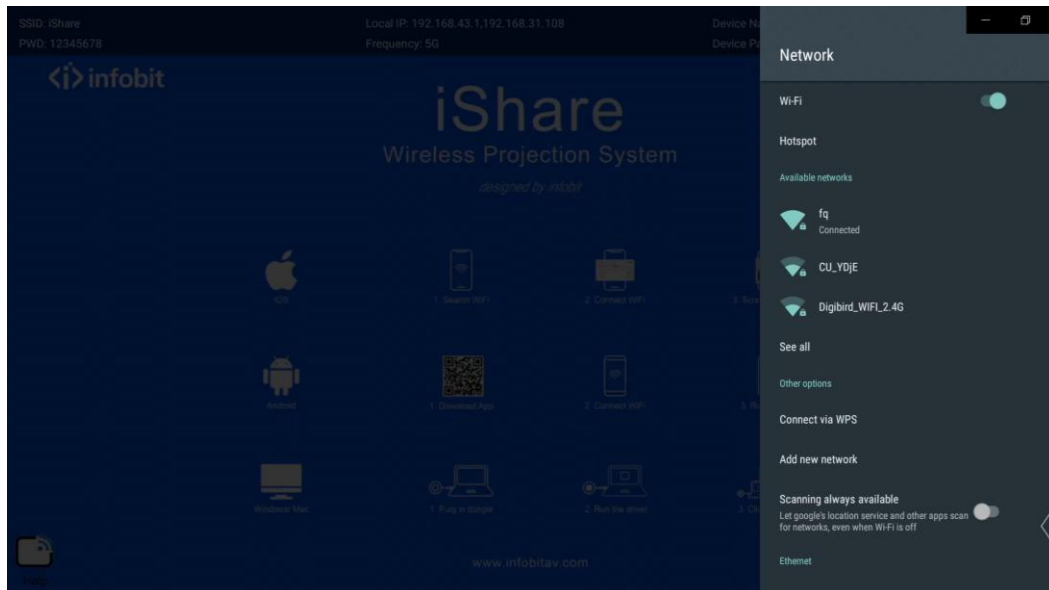


## Mobile Device Cast

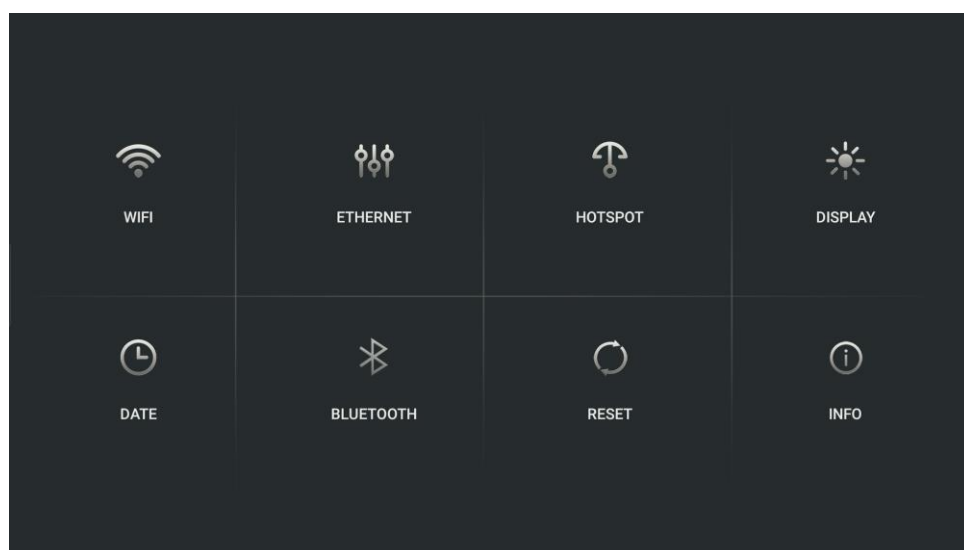
### WIFI Connection

Receiver can connect to WIFI and route network to mobile devices connected to iShare receiver hot spot. This allows mobile devices to access network when casting.

1. Enter into <Network Setting> and select target network.

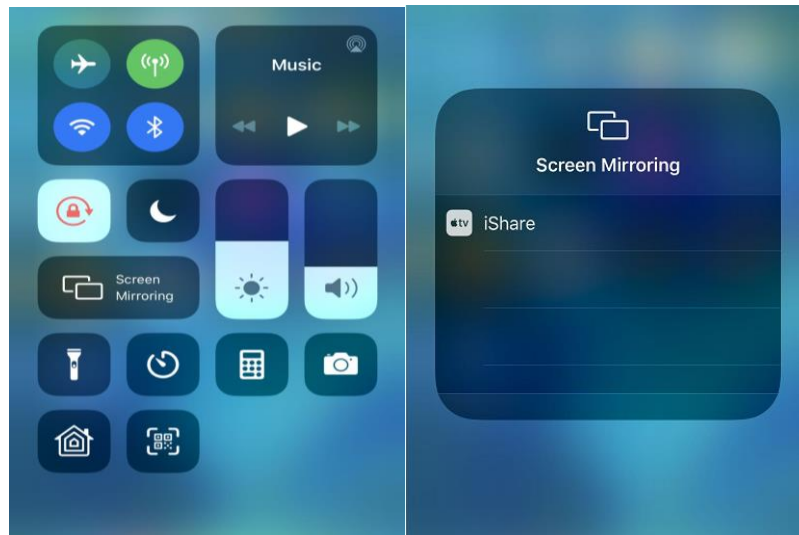


Long press any of right bottom icons at homepage to call out control center and select <Setting>. Click <WIFI Setting> to select targeted network.



## iOS Cast

Connect iOS devices to iShare receiver hot spot, and tap Screen Mirroring at control center. Then, select iShare to enable cast.

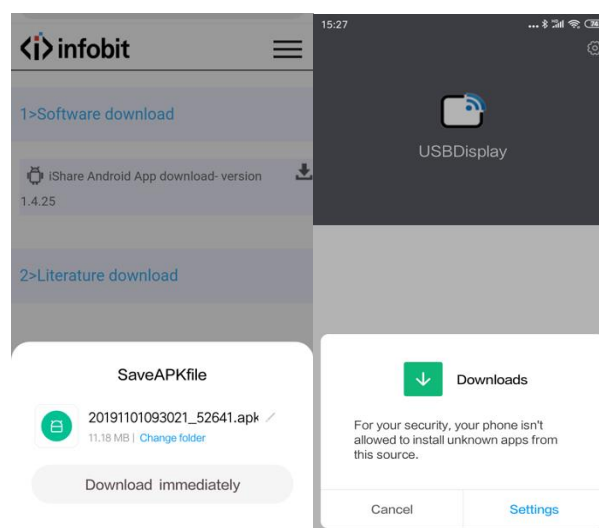


## Android Cast

### 1. APP Cast

Connect your mobile device to network, scan the QR code displayed at home page to download app. Once installation completed, by tapping the icon, you are able to cast your sources.

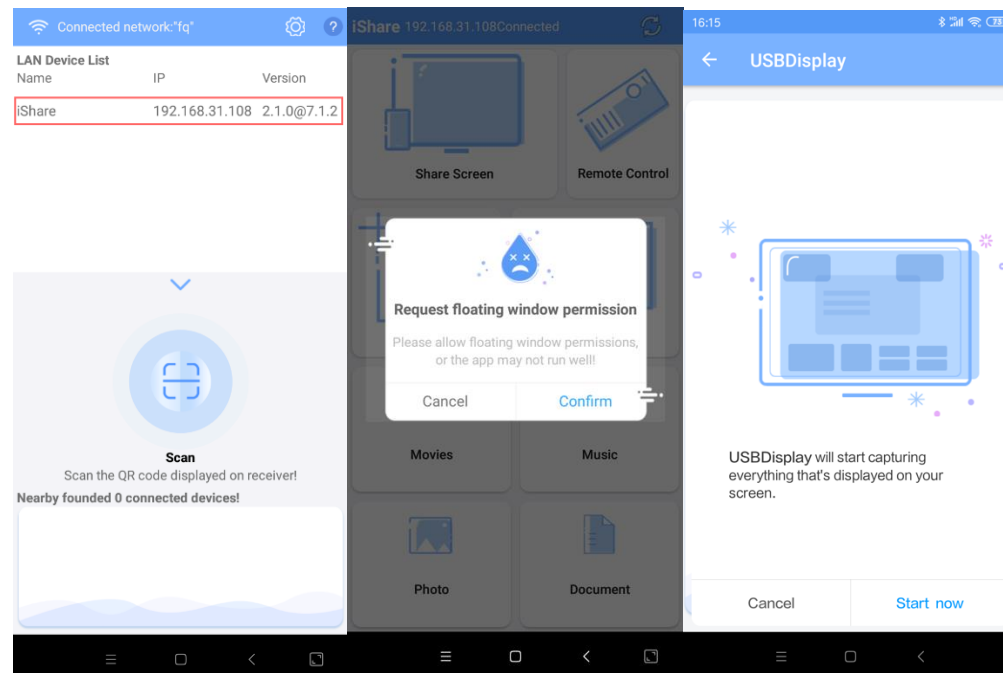
Or Download the “iShare Android App” on <https://www.infobitav.com/download/>



*Note: Please setup to allow your phone to install unknown apps.*

Run “USBDisplay” app, and scan the QR code. Your device will connect to iShare receiver hotspot automatically.

Or connect the same WiFi with the iShare receiver, and select the IP address. That will generate floating window permission, please confirm in your settings. Tap “Start now” to enjoy your mirroring.



*Note: Only available on system older than Android 5.0*

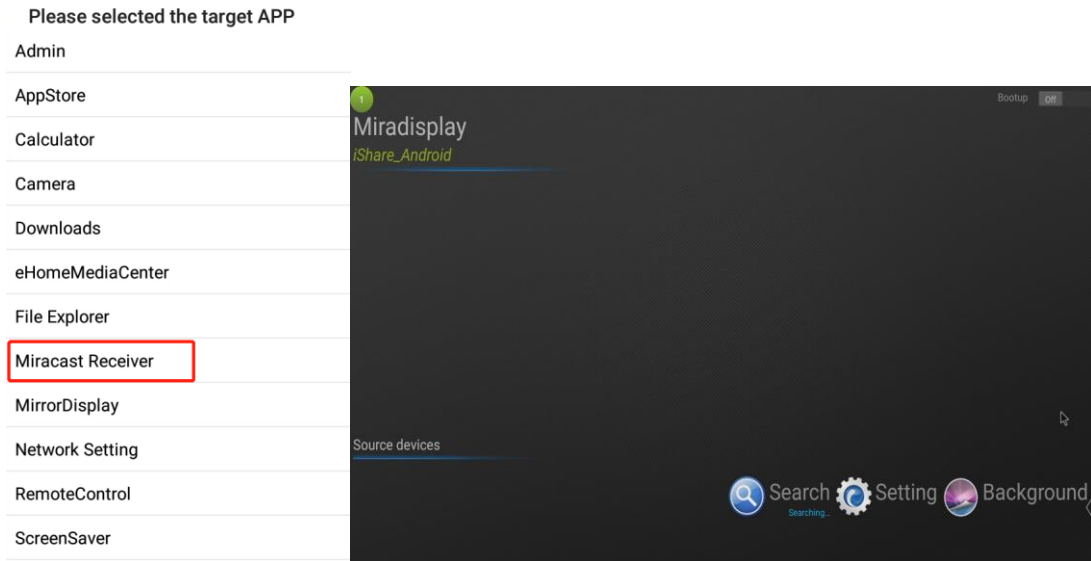
When starting to cast, your device will receive Bluetooth authentication notice. Please accept application to enable audio cast. Otherwise, audio will be disabled.

If the application is denied by maloperation, you can enter into Bluetooth setting page and pair iShare receiver manually. For the following-by operations, Bluetooth will be paired or disconnected automatically when starting or quitting a cast.

Every time when starting a cast, you will get a notice that audio device connected. This indicates that audio is ready to cast. Or you have to pair Bluetooth manually if there is no such notice.

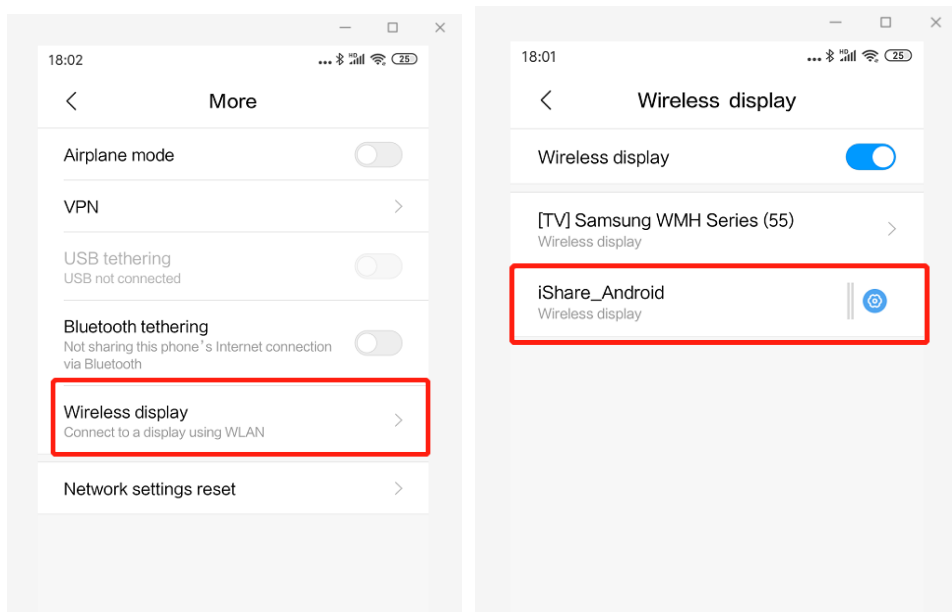
## 2. Miracast

Long press any of right bottom icons at homepage to call out control center and select <Miracast Receiver>.



When your devices start to cast, sources devices will list the device model. If enable <Bootup>, the page will pop out automatically.

After running the cast or mirror function on your device system, your device will auto search available displays. Then you can select targeted display and start to cast.



*Note: Only available on system at Android 5.0 or later.*

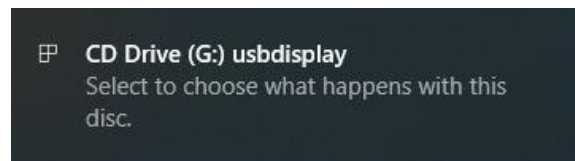


## FAQ

### USB Dongles

1). There is no response when USB dongle was plugged into PC.

If the computer works with dongle for the first time, you have to run USBDisplay driver when it pops up after plugging in dongle, or follow My Computer->CD Drive USBDisplay to run the driver.



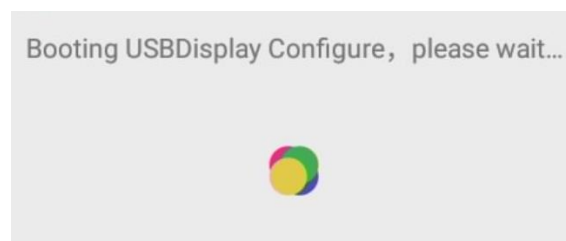
*Notes: Windows defender should be disabled on Win 10 OS.*

2). iShare receiver not found

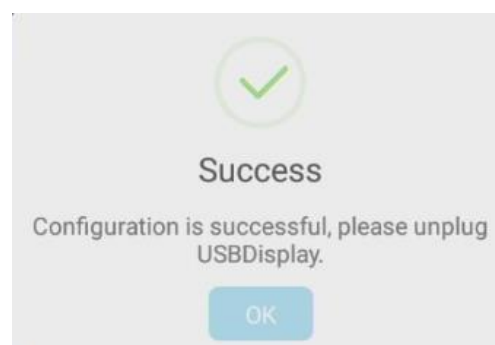
Please recheck if the dongle has been paired with iShare receiver. The dongle has to be paired again if iShare receiver is reset, or hotspot name and password are revised.

3). USB dongle failed to pair.

Connect USB dongle to iShare receiver, system will auto enable pair.



And remove dongle once pair completed.



#### 4). USB Dongle Upgrade

Receiver will auto upgrade when connected to network if new version detected. USB dongle has to be connected to iShare receiver for upgrade. Please don't remove USB dongle before upgrade completed.

### Mobile Devices Cast

#### 1). Android devices not found hotspot

In this case, please ensure the device itself support 5G WIFI. Or you have to set up iShare receiver hotspot at 2.4G.

*Notes: We highly recommend you to cast at 5G WIFI.*

#### 2). Android device not found iShare.

(1). Please recheck if the device is successfully connected to iShare receiver hotspot instead of other networks.

(2). Android device is in same LAN network with iShare receiver. Run USBDispaly at the device, enter into setting page, and input iShare receiver IP. Back to homepage, input cast code to start cast.

#### 3) Audio has been disabled.

Enter into Bluetooth setting page at your device, search for iShare receiver Bluetooth name and pair correctly. For the following operations, Bluetooth will be paired or disconnected automatically when starting or quitting a cast.

The issue might appear in below:

- (1) Application of Bluetooth access was denied when it popped up.
- (2) Audio access was not allowed by device system by considering security or privacy.
- (3) Bluetooth of iShare receiver and Android device was disabled manually.

#### 4) iOS device can not cast

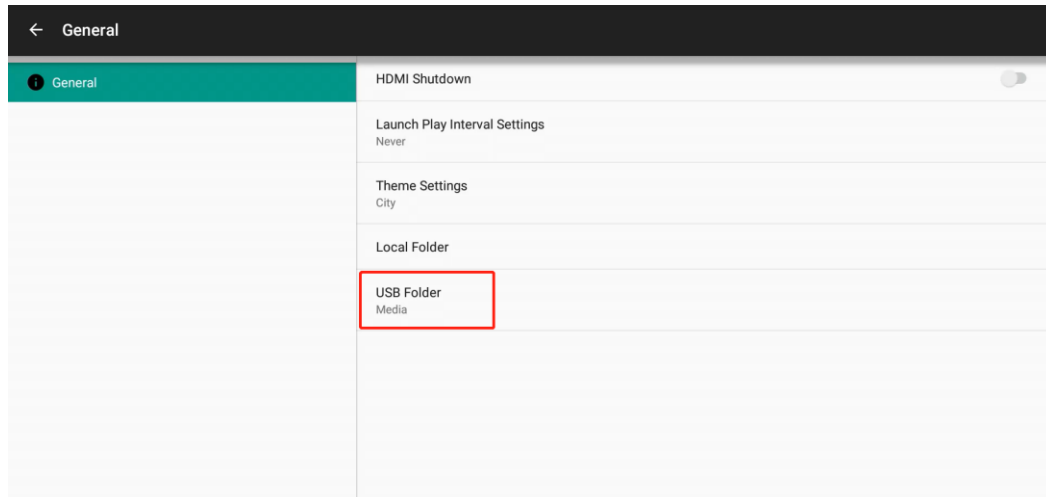
For iOS devices, please make sure the iOS version at 9.0 or later.

### Change Lock Screen

Input the desired wallpaper image to a USB flash disk, and connect to iShare receiver. Enter into file browser, create a folder named Media, and copy the image to Media Folder.

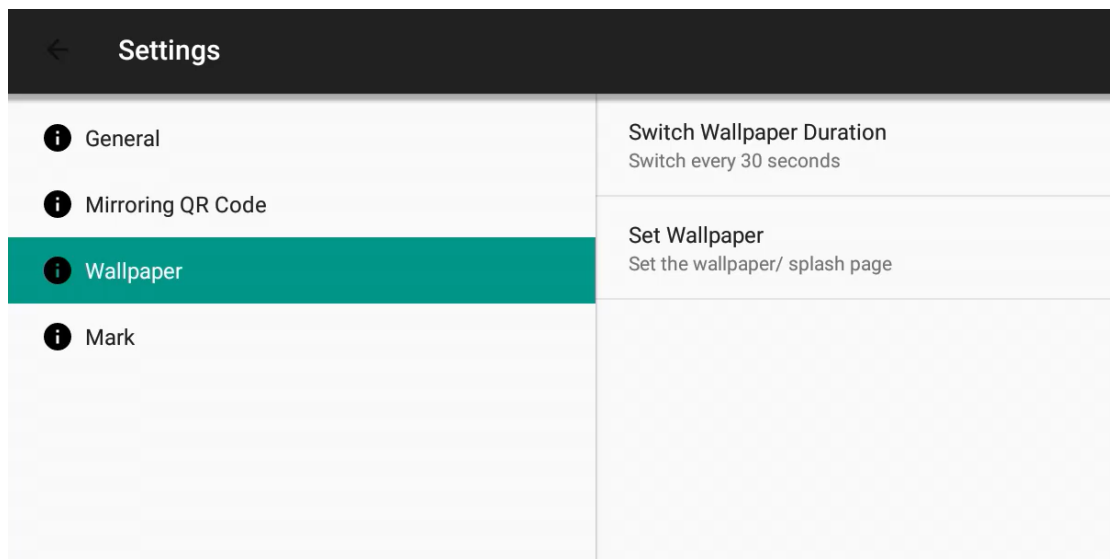
Long press any of right bottom icons at homepage to call out control center and select <Screensaver>.

Enter into the page, and long press left bottom corner to enter into setting page.



## Change Wallpaper

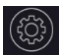
Long press setting icon at top right corner of homepage, enter into wallpaper page, click add and select desired image. If more than one image is saved, the wallpaper will auto switch every 30s.




## APP Updates

Long press any of right bottom icons at homepage to call out control center and select <APP Store>.

Enter into the page and click download to update APP.

Or click setting icon  at right top corner of home page and enable auto updates.

## Cross Network Cast

Enter into setting page  at right top corner of home page, select cast code setting, input server IP address, and enable cast code button. The 6-digit number will be cast code.

1. Cloud server and self-built server are supported.
2. Compatible with Windows, Mac and Android devices.